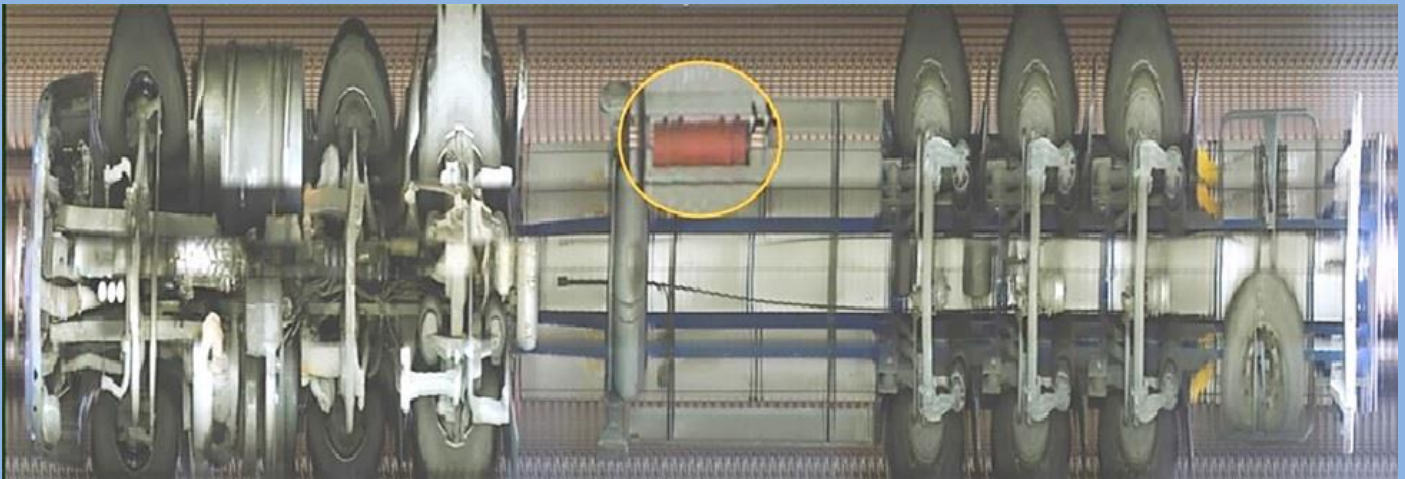


# Visor systems

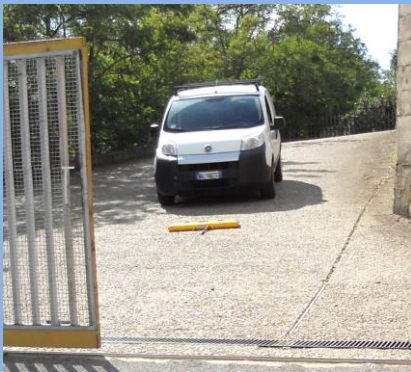
[www.visor-systems.com](http://www.visor-systems.com)  
[enquiries@visor-systems.com](mailto:enquiries@visor-systems.com)

## Advanced Under Vehicle Imaging Systems

When demanding standards of vehicle inspection are required



**VISOR** under vehicle inspection system (UVIS) systems are deployed at the checkpoints for locations including: critical infrastructure, major events, VIP locations, border crossings, transport terminals, defence and other governmental facilities etc.



The **VISOR UVIS** uses multiple angled digital GigE cameras and advanced VisorSoft image processing software to provide operators with the excellent quality colour images you need to find threat items.

It's not always easy to see suspect items but with **VISOR's** angled cameras and easy to use VisorSoft software you can "see around" into places which are "difficult to see". Search is made easy by using the Image Lens to inspect the underside image in detail by moving the Lens cursor over the full image.



Unless you have more than one view of an area, objects obscured by structural members or vertical panels are difficult to see. **VISOR's** angled cameras and VisorSoft's frame by frame facility and image enhancement tools make inspection easier and more efficient.



# Visor systems

[www.visor-systems.com](http://www.visor-systems.com)  
[enquiries@visor-systems.com](mailto:enquiries@visor-systems.com)

There are three **VISOR UVIS** ranges:

- **Standard:** for inspecting cars, vans, buses, coaches, trucks, etc...
- **Compact:** for inspecting cars, vans and light vehicles.
- **Rail:** for locomotive and rolling stock inspections.

Each of the three configurations is available for **portable** or **static** requirements. There are **surface** and **flush** installation versions of the static models.

**Custom systems:** **VISOR's** inherently highly flexible technology and software allows us to design custom vehicle inspection systems with many more cameras and additional sensor systems.



## Features include:

- Portable **VISOR** systems can be deployed by 1 person in less than 5 minutes
- About 1 second to display the full image
- Easy to use
- Displays a single composite image
- 12x Zoom / Detail view at full resolution
- Side by side image comparison
- Fast storage and retrieval of records
- Image archive facility
- "see around" capability
- Licence plate assistance – built in
- Forward and reverse traffic operation
- Free flow and single mode operation
- Robust all-weather camera unit
- Flush, surface and portable models
- HD digital colour cameras
- 19" rack electronics
- High performance Windows PC
- High quality LCD displays (built-in 19" high brightness type for all Portable models)
- LED lighting - Day and night operation
- Ethernet compatibility
- Optional full ANPR functionality
- Optional second screen for Zoom view
- Optional 24 vdc supply operation
- Optional volt free contacts to control barriers etc

## Further details from:

### Visor Systems Ltd

64 Chorley Road,  
Bispham,  
Ormskirk,  
L40 3SL, UK

Tel: +44 (0) 125 746 4000

Email: [enquiries@visor-systems.com](mailto:enquiries@visor-systems.com)

Website: [www.visor-systems.com](http://www.visor-systems.com)

Available from: